

STRATEGIC IP-ASSET PORTFOLIO -- NOW AVAILABLE EXCLUSIVELY

Three Issued US Patents - More Pending / Coming For: IoT / SmartAppliances in Homes and Buildings

Q: How Do You Conquer the SmartHome Appliance / IoT Market?

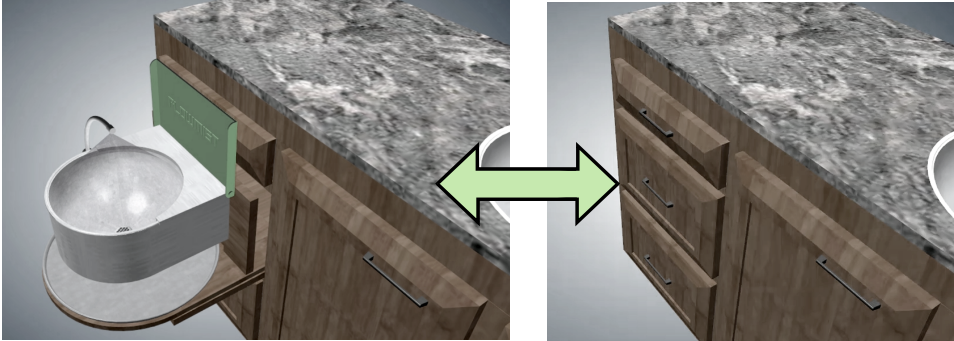
A: One Room at a Time

Q: How Do You Win a SmartHome Room?

A: Provide a NEW SmartHome Appliance with ~~10x~~ ~~100x~~ 1000x Water-Saving Efficiency

Revealed for 0.5 oz Water Use-Cycle

Concealed when Not in Use



PATENTED CONTROL MODES:

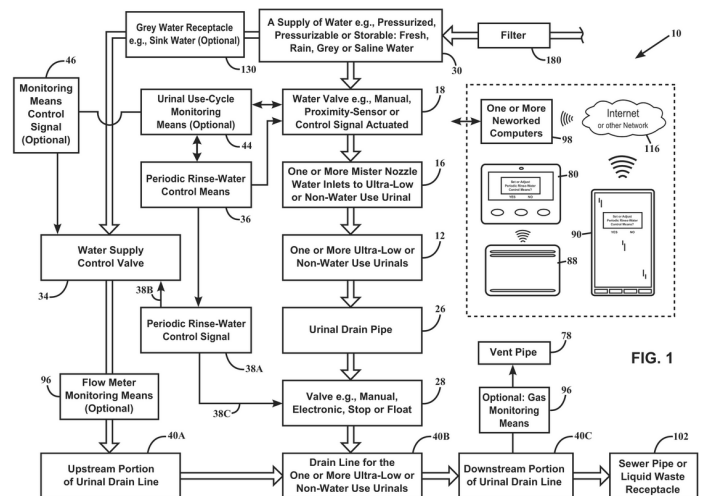
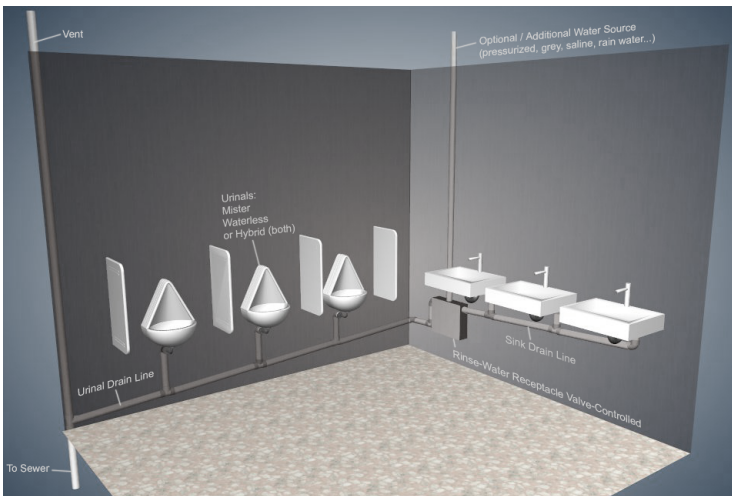
- Wireless Handheld Devices
- Voice-Command Activation
- Motion-Sensing
- Heat-Sensing

HOME • BUILDINGS • NEW • RETROFIT • MAKEOVER MODELS

See Different Models and Systems for Home and Buildings Markets at:
FLOWMIST.COM

PATENTED: Zero-Footprint In-Cabinet and In-Wall Models. Water and Energy Saving **Breakthrough:** Take the water used by an average U.S. toilet in **one day** (used for liquid-waste removal) and Flowmist's *microdroplet-rinsing* will instead use it over **1000 days** (at **five rinsings** per day) -- capable of **saving billions of gallons of water a day** and all the energy it takes to move that much water. **Fits in Any Existing Bathroom:** Installable as new, retrofit or in home restroom make-overs. Each *Zero-Footprint* In-Cabinet or In-Wall model features *Ultra High Efficiency* (UHE) water savings and low-cost (as a sure candidate for water savings credits). **Think: Clean, Green and Seldom Seen**

Comprehensive IP Portfolio Includes Buildings SmartAppliance / IoT Systems Patent Application:



Title and Abstract: Buildings IoT Systems:

System for Automated, On-Site and Remote Management of Restroom Ultra High Efficiency-Appliances and Interoperable Components Thereof

ABSTRACT: A system is provided for automated, on-site and remote managing, maintaining and control of restroom ultra high efficiency (UHE) appliances, components and interoperable-components thereof, in a water and energy conserving manner. System-wide monitorings, of use-cycles and cumulative-usage pertaining to UHE-appliances and/or components, provide system-data communicable to system control means for automated-control of UHE-rinsings of UHE-appliances and plumbing. In on-site and remote system modes, system-data is communicable via the internet or a network and made accessible to an authorized-user, in 2D/3D for-

Contact: Darrell Metcalf - President
805-524-1747 dmetcalf@flowmist.com

mats, for adjusting, setting or controlling system parameters/settings via a user-interface and touch-screen of an on-site wall-mounted apparatus or by NFC/RFID interaction therewith, or remotely, via a user-interface of a wireless handheld device, Smartphone, tablet or computing device. UHE-appliances/components are configurable to pass less than two ounces of water per use-cycle and UHE-rinsings, and optionally include modular monitor-and-report plug-in components e.g., sensor, timer, monitoring means, flow-meter, valve-controller, and the like.

